



1914—1918

EXPLORING THE
IRISH EXPERIENCE



NLI WWI LEARNING RESOURCES

Leaving Certificate Students worksheet

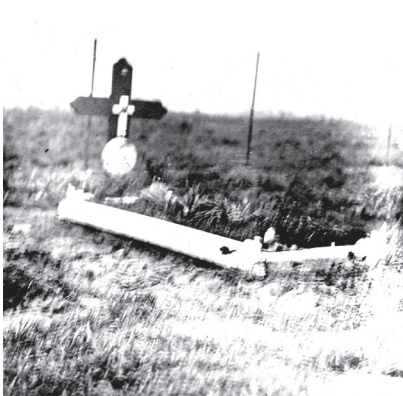
NAME:

SCHOOL:

AFTER YOUR VISIT

1 Look back on the guesses you made about how the war might have impacted on people – did the evidence you found in the exhibition change your mind? List anything which surprised you here:

2 Choose one of the 4 exhibition characters. Write from their perspective about what they experienced during World War I and why they chose to respond in the way they did?





3 The ways in which people remember World War One have changed over the years – especially in Ireland. Based on what you saw in the exhibition, what you have covered in class and on your own research, write about how the war was remembered at 3 different points in time:

1919

1950s

TODAY

This image shows a blank sheet of white paper with horizontal ruling lines. The lines are evenly spaced and run across the width of the page. There are no margins, text, or other markings on the paper.

More stories from the exhibition - **www.nli.ie/WWI**

Archive film with Irish memories of the war - **www.rte.ie/worldwar1/**

The complex way the war was commemorated -
www.bbc.co.uk/history/british/britain_wwone/ireland_wwone_01.shtml

Just how many Irish people died? Historians debate the evidence:
www.irishtimes.com/culture/heritage/irish-soldiers-in-the-first-world-war-who-where-and-how-many-1.1884022

The amazing story of how letters were delivered to the front
www.bbc.co.uk/guides/zgtmyrd

Horne, J *Our War: Ireland and the Great War*



Leabharlann
Náisiúnta
na hÉireann
National Library
of Ireland